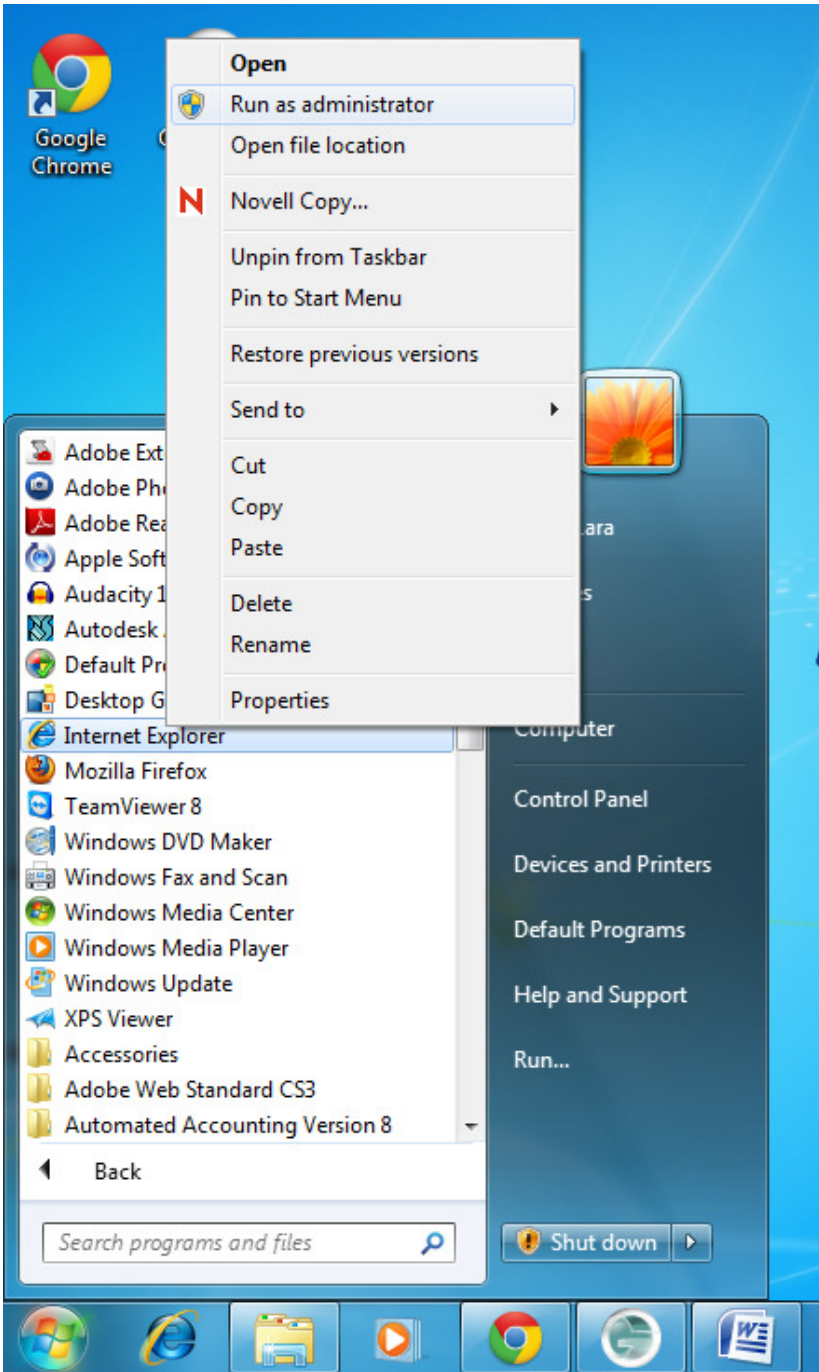


How to Add a Network Printer at Ridge High and, William Annin

Right Click on the icon of either, Internet Explorer or Firefox web browser then select **Run as Administrator**.

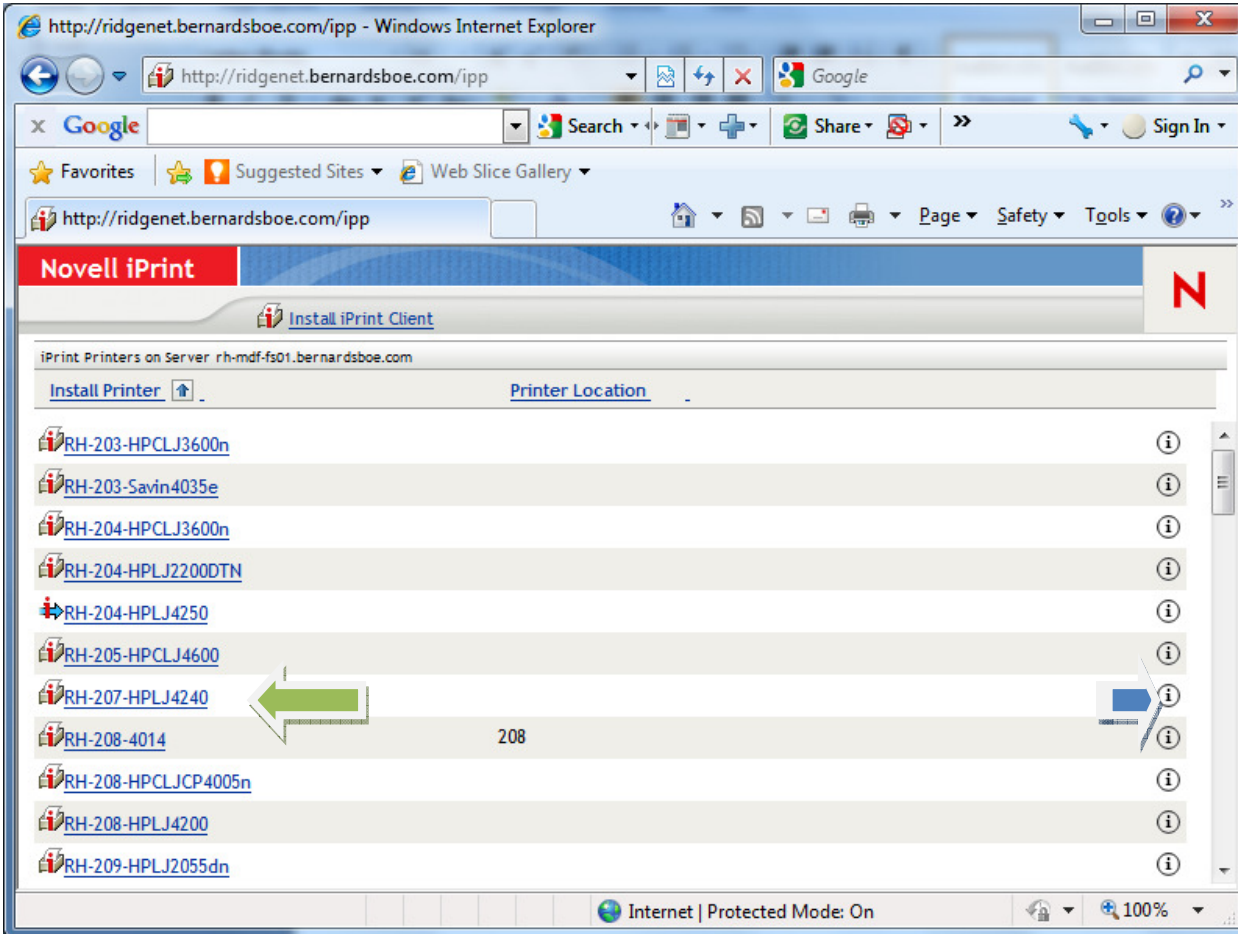


Then type in your corresponding school in the URL box with one of the following addresses:

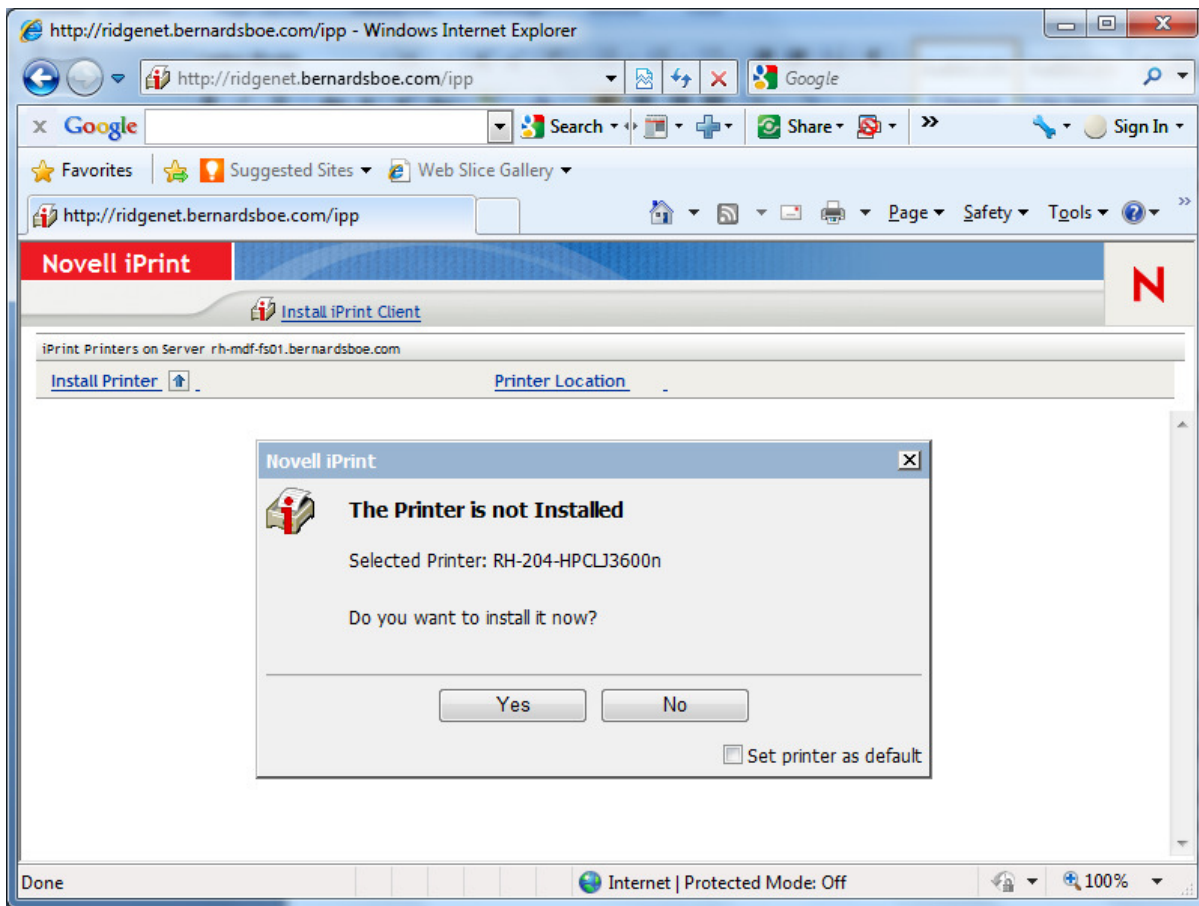
For Liberty: <http://wa/ipp>

For Mount Prospect: <http://rh/ipp>

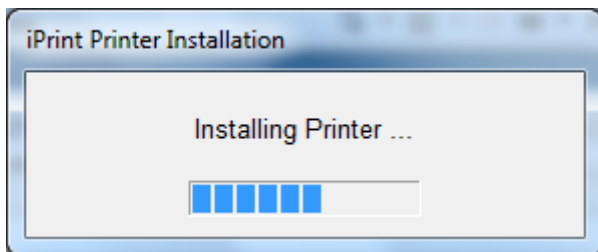
Locate the desired printer by the printer names listed.



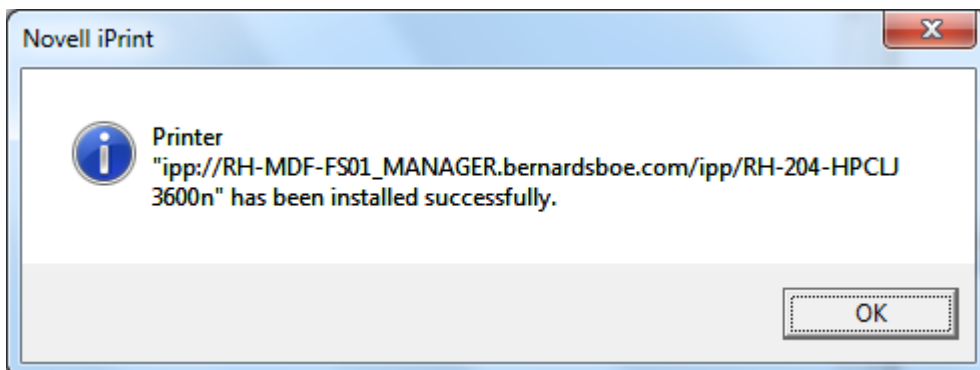
Simply click on the name of the printer you want to install in the window with the list of printer names.



Click Yes.



The installation will take a few minutes. Before a successful installation message will appear.



Once that has completed, you can verify the printer was installed by checking the “Devices and Printers” page from the Start Menu.

