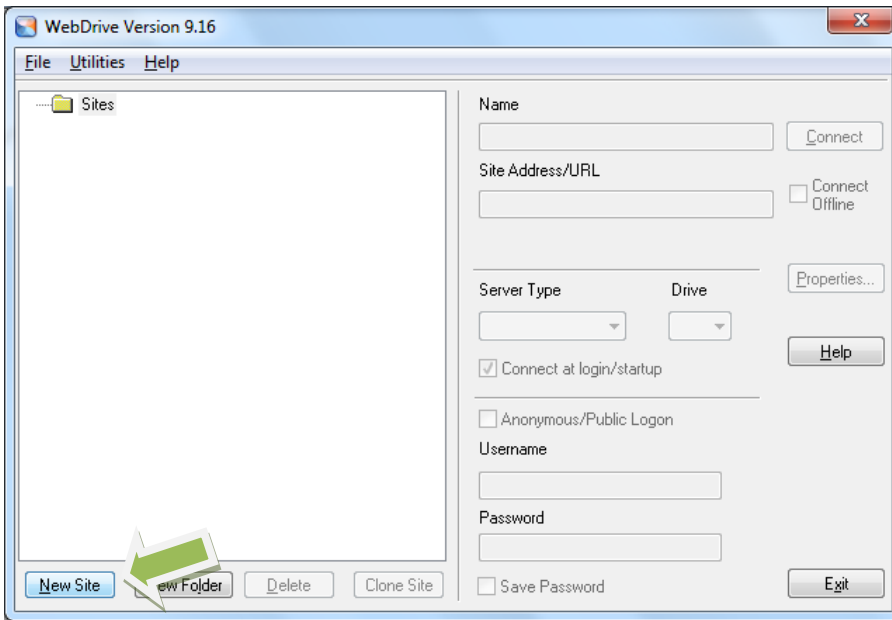


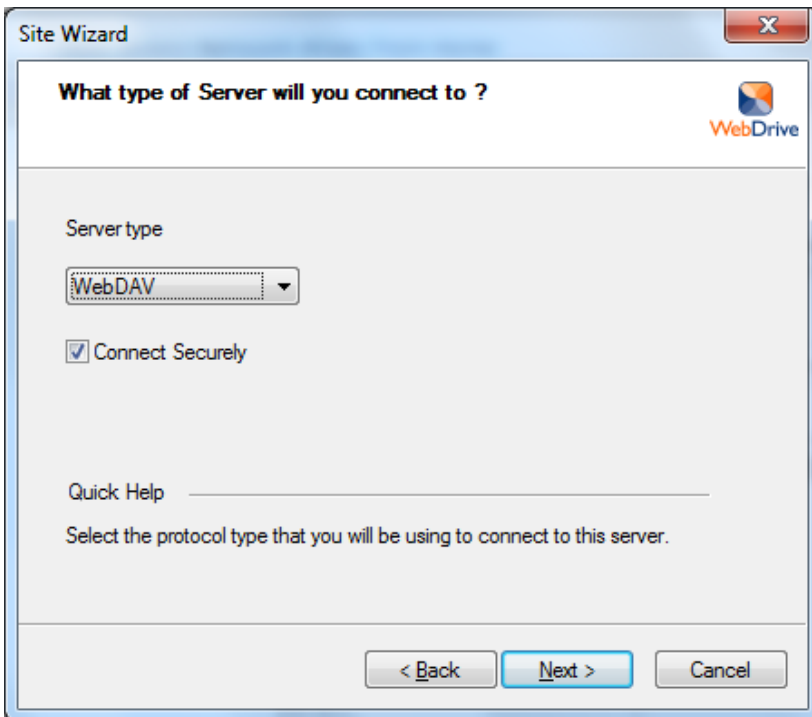
How to Access Network drives from Home

Find the “WebDrive” Program in the Start Menu.



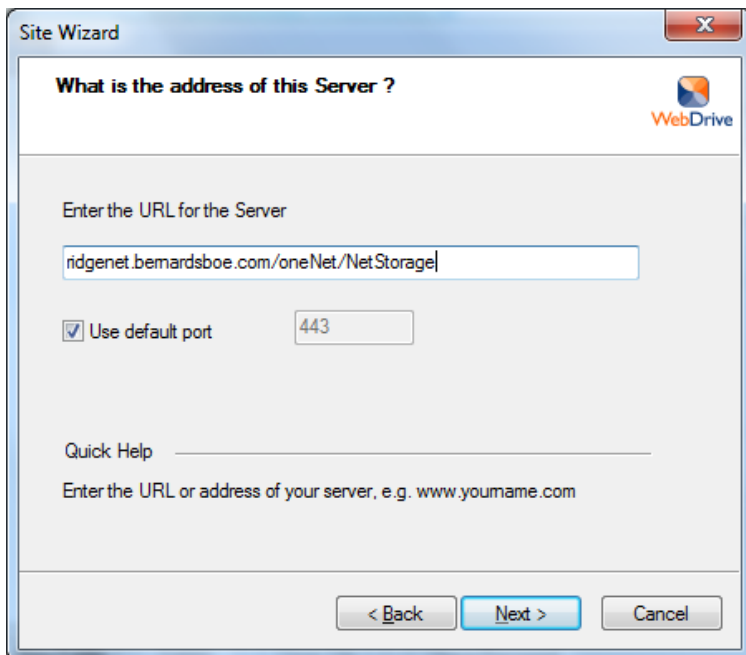
Click the “New Site” button in the bottom left hand corner .

In the next dialog window, select “WebDAV” and check the “Connect Securely” checkbox. Then click “Next”.



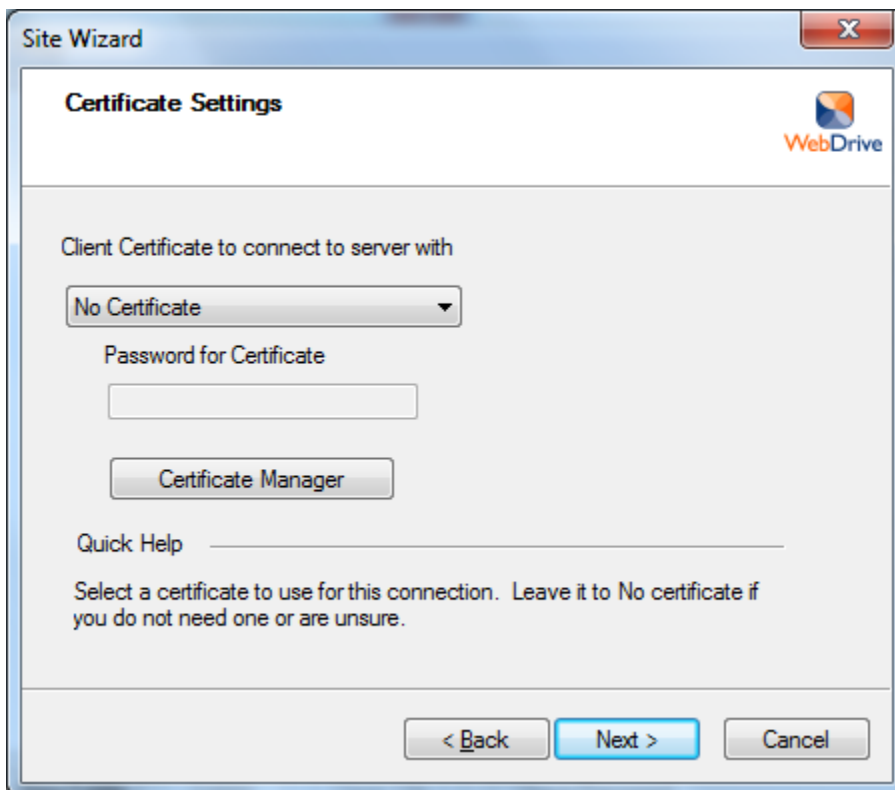
In the next dialog window, enter the following url:

ridgenet.bernardsboe.com/oneNet/NetStorage



The image shows a 'Site Wizard' dialog box with the title 'What is the address of this Server?'. It features the WebDrive logo in the top right corner. The main area contains a text input field with the URL 'ridgenet.bernardsboe.com/oneNet/NetStorage' entered. Below the input field is a checked checkbox labeled 'Use default port' and a text input field containing '443'. At the bottom, there are three buttons: '< Back', 'Next >', and 'Cancel'. A 'Quick Help' section at the bottom left contains a horizontal line and the text 'Enter the URL or address of your server, e.g. www.youname.com'.

After clicking next, leave the Certificate Setting dialog window as is and click Next again.




The image shows a 'Site Wizard' dialog box with the title 'Certificate Settings'. It features the WebDrive logo in the top right corner. The main area contains a dropdown menu labeled 'Client Certificate to connect to server with' with 'No Certificate' selected. Below this is a text input field for 'Password for Certificate' and a 'Certificate Manager' button. At the bottom, there are three buttons: '< Back', 'Next >', and 'Cancel'. A 'Quick Help' section at the bottom left contains a horizontal line and the text 'Select a certificate to use for this connection. Leave it to No certificate if you do not need one or are unsure.'

In the next window, enter your Novell username and password, check "Save Password" and click Next.

Site Wizard

Please enter Account Information



Anonymous/Public Logon

Username:

Password:

Save Password


Quick Help _____

Enter your username to access the server.

In the following dialog window, enter any name for your Network Drives and press "Next". Note: make the drive is **not** set to one that you use when logged in one campus, ie P:, H:

Site Wizard

What would you like to call this Site ?
Enter a name for the site you will be creating.



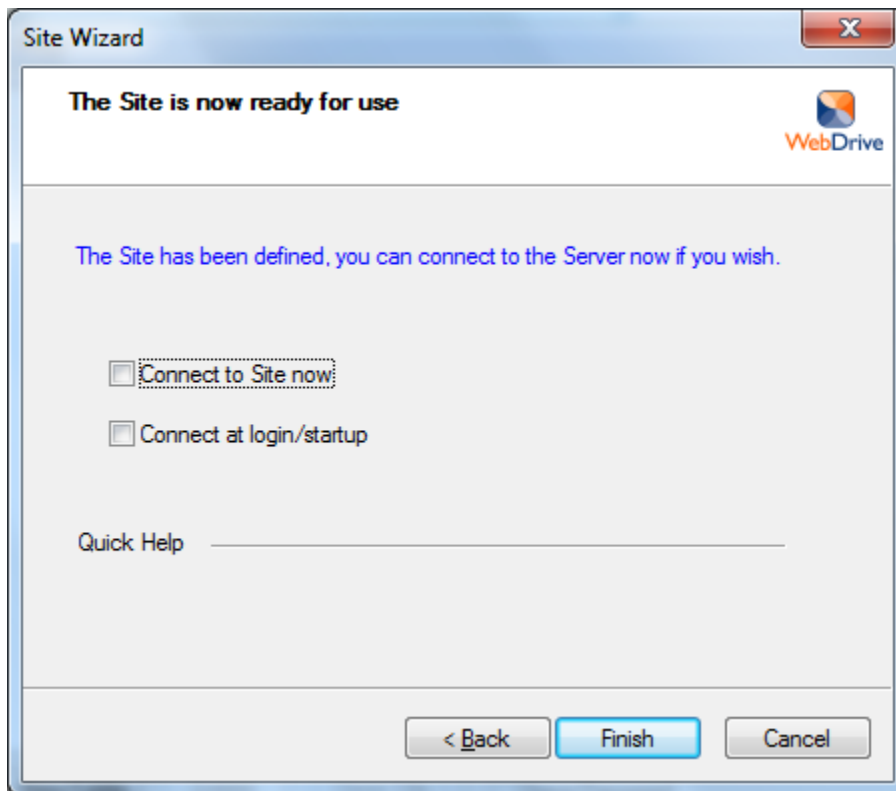
Enter the name for the site you will be connecting to

Drive

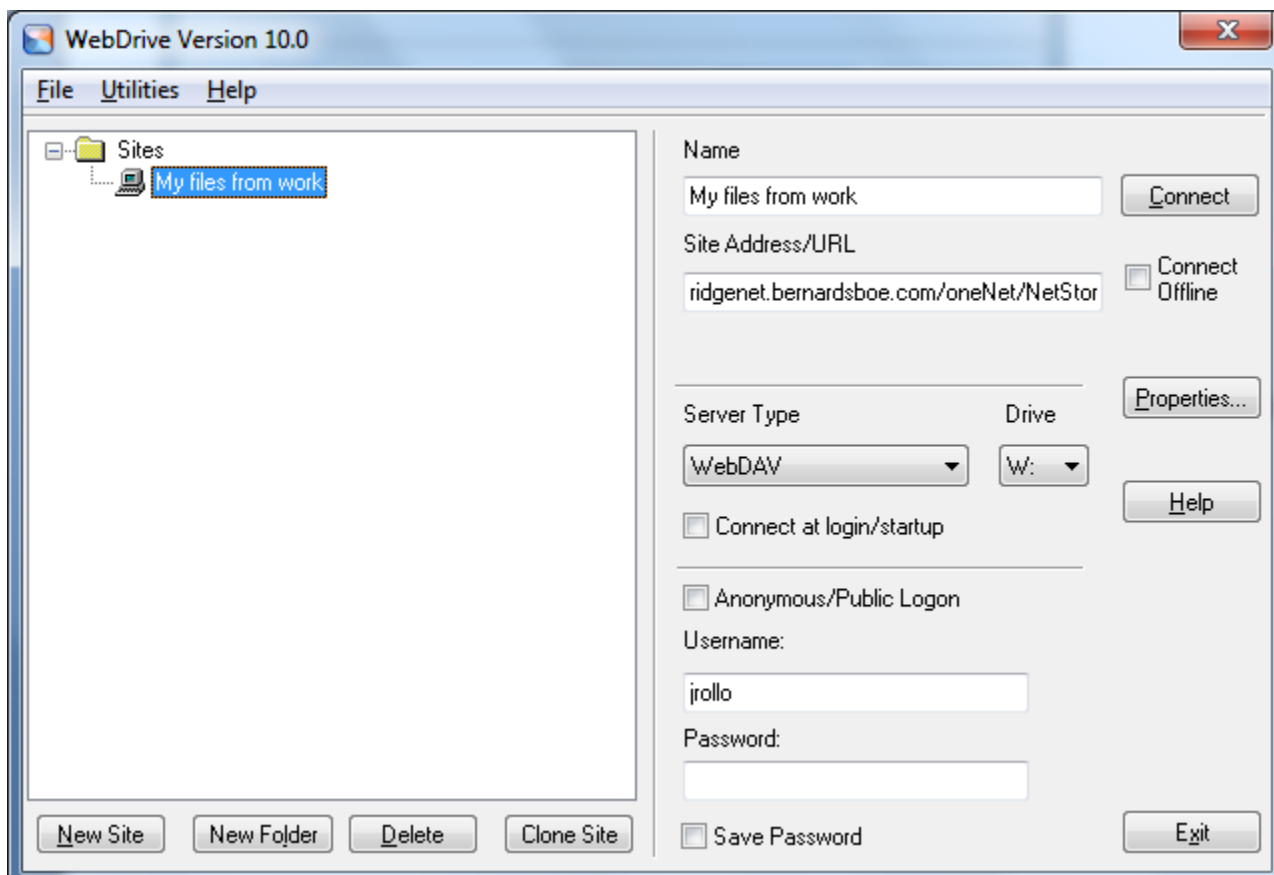
Quick Help _____

Enter a name for the site you will be creating.

One final dialog window, do not check either checkbox, and then click Finish.

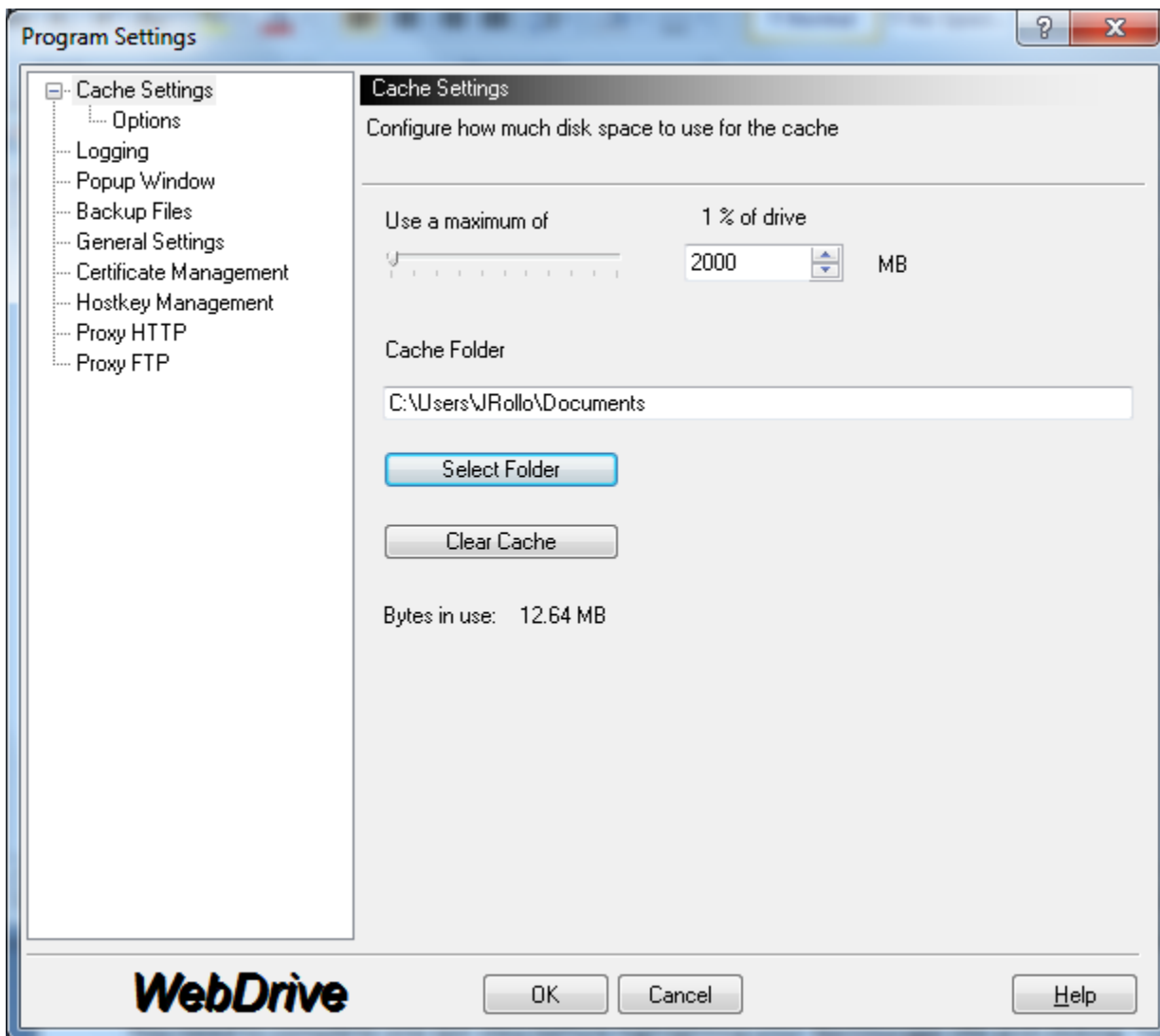


You should now see your NetStorage site in the WebDrive program.

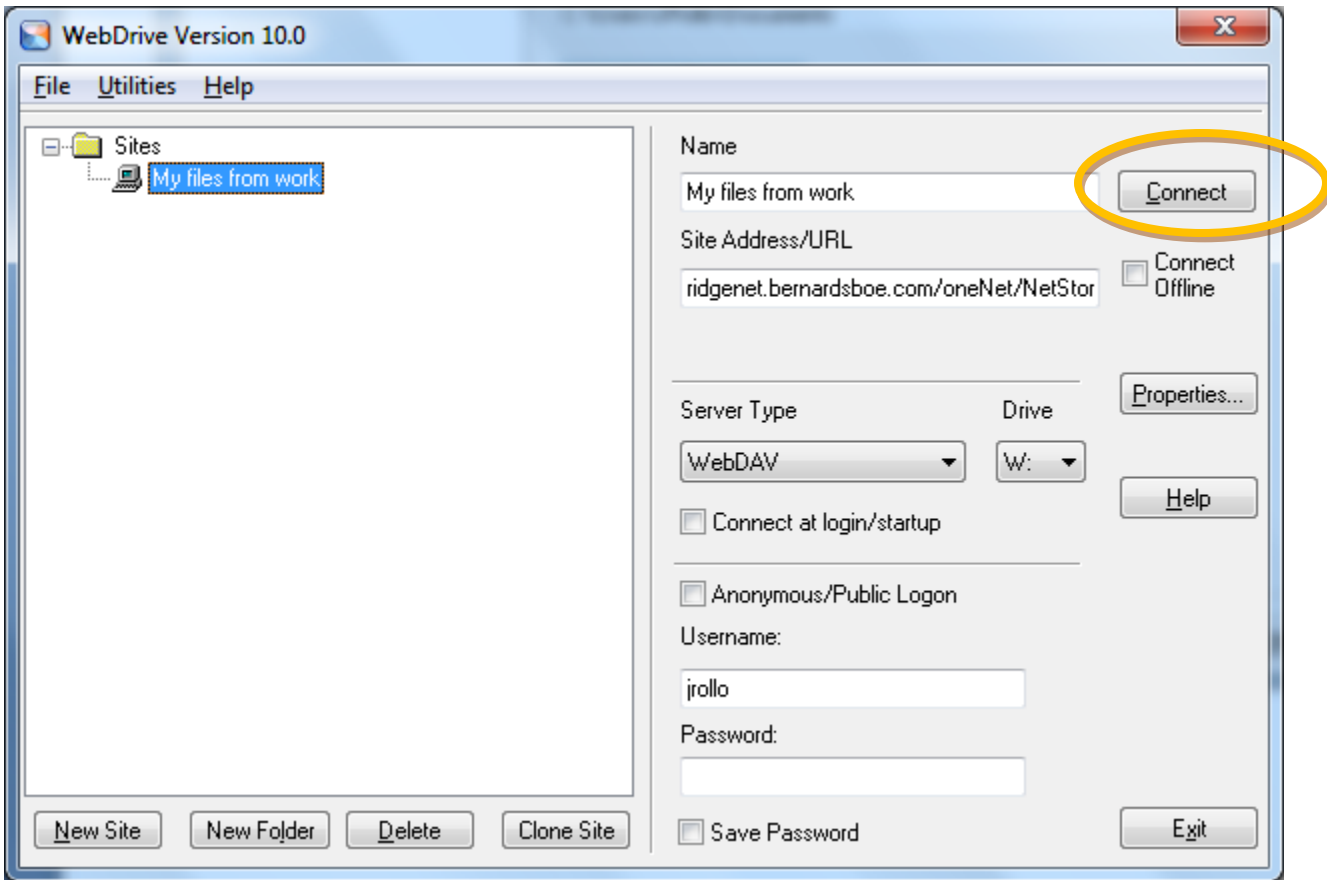


You need to complete one last step before highlighting your NetStorage site and clicking “Connect”. Click “File” and then “Program Settings..”. Under the “Cache Settings” page, set your “Cache Folder” to C:\Users\YourUsername\Documents

Then click “OK”.



Now you can connect to your NetStorage site by clicking “Connect”.



Once you’ve connected to your site, you’ll see your network drive in “Computer” on the Start menu.

