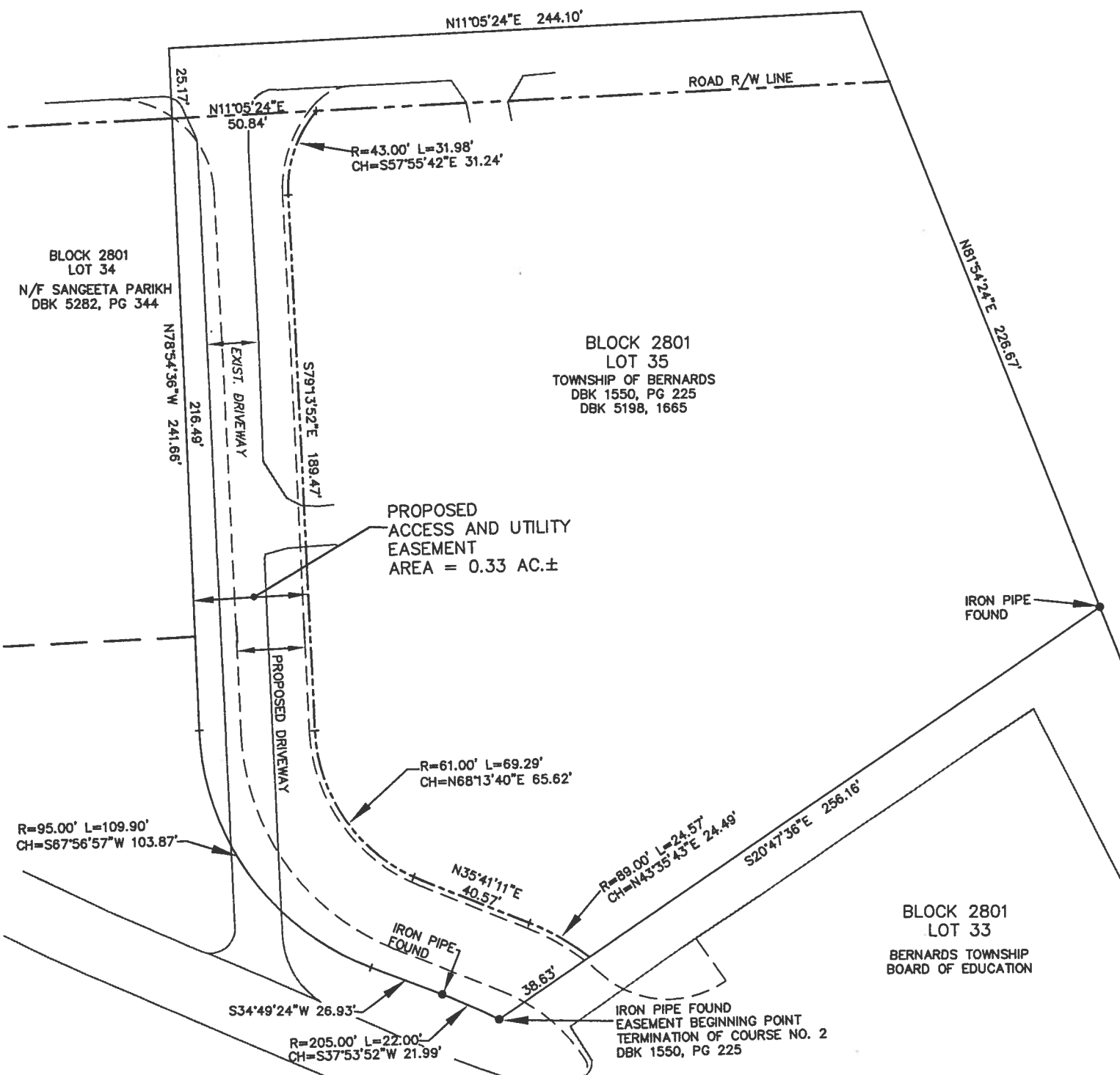


**SOUTH FINLEY AVENUE**  
(VARIABLE WIDTH R.O.W.)



**NOTES:**

1. THE SUBJECT PROPERTY IS KNOWN AND DESIGNATED AS LOTS 33 AND 35 IN BLOCK 2801 AS SHOWN ON SHEET 28 OF THE BERNARDS TOWNSHIP, SOMERSET COUNTY TAX MAP.
2. REFERENCE DEEDS:  
 A DEED DATED 8-12-85 FROM ANTOINETTE HENDERSHOT TO TOWNSHIP OF BERNARDS RECORDED AT THE SOMERSET COUNTY CLERK'S OFFICE IN BOOK 1550 OF DEEDS ON PAGE 225.  
 A DEED DATED 8-21-2002 FROM BERNARDS TOWNSHIP BOARD OF EDUCATION TO TOWNSHIP OF BERNARDS RECORDED AT THE SOMERSET COUNTY CLERK'S OFFICE IN BOOK 5198 OF DEEDS ON PAGE 1665.
3. REFERENCE MAP:  
 "PARTIAL TOPOGRAPHY FOR EXIT DRIVEWAY RIDGE HIGH SCHOOL," PREPARED BY HATCH MOTT MACDONALD, DATED 5-21-2013, DRAWING NO.6888.1-F.

		PAMELA L. MATHEWS, PROFESSIONAL ENGINEER, LAND SURVEYOR NEW JERSEY LICENSE NO. 41181 
Date	Revision	

Job: 311239	
File: BT RIDGE HIGH	
Book:	Page:
Drawn: SLY	Checked: JC
Scale: 1" = 50'	Sht. No.
Date: 9/18/2013	1 OF 1
Drawing No.:  <b>1402-H</b>	

**PARCEL MAP**  
**ACCESS & UTILITY EASEMENT**  
  
**RIDGE HIGH SCHOOL**  
 IN  
 BERNARDS TOWNSHIP  
 SOMERSET COUNTY, NEW JERSEY  
  
 TAX MAP SHEET 28 - BLOCK 2801, LOTS 33 & 35

**Hatch Mott  
MacDonald**

Certificate No. 24GA28016600

Perryville III  
 53 Frontage Road, Suite 170  
 Hampton, New Jersey 08827  
 Tel: 908.730.6000 Fax: 908.730.6500



September 18, 2013

DWG# 1402-H

ACCESS AND UTILITY EASEMENT  
WITHIN  
BLOCK 2801, LOT 35  
BERNARDS TOWNSHIP, SOMERSET COUNTY, NEW JERSEY

Beginning at an iron pipe found, corner to lands now or formerly of the Bernards Township Board of Education, said point being the termination of the second course mentioned in the description of a tract of land conveyed by Antoinette Hendershot to Township of Bernards, recorded in the Somerset County Clerk's Office in book 1550 of deeds on page 225, and running thence the following three courses along said Bernards Township Board of Education,

1. By a curve to left having a radius of 205.00 feet, an arc length of 22.00 feet, and whose chord bears south 37 degrees 53 minutes 52 seconds west 21.99 feet to an iron pipe found at a point of tangency; thence,
2. South 34 degrees 49 minutes 24 seconds west 26.93 feet to a point of curvature; thence,
3. By a curve to the right having a radius of 95.00 feet, an arc length of 109.90 feet, and whose chord bears south 67 degrees 56 minutes 57 seconds west 103.87 feet to a point; thence,
4. Still along said Board of Education, then along lands now or formerly of Sangeeta Parikh, north 78 degrees 54 minutes 36 seconds west 216.49 feet to a point in the easterly right of way line of South Finley Avenue; thence,
5. Along said easterly right-of-way line, north 11 degrees 05 minutes 24 seconds east 50.84 feet to a point; thence,
6. By a non-tangent curve to left having a radius of 43.00 feet, an arc length of 31.98 feet, and whose chord bears south 57 degrees 55 minutes 42 seconds east 31.24 feet to a point; thence,
7. South 79 degrees 13 minutes 52 seconds east 189.47 feet to a point of curvature; thence,



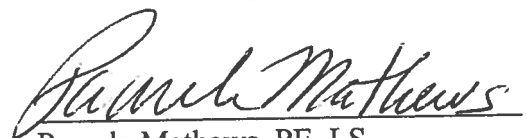
8. By a curve to left having a radius of 61.00 feet, an arc length of 69.29 feet, and whose chord bears north 68 degrees 13 minutes 40 seconds east 65.62 feet to a point a tangency; thence,
9. North 35 degrees 41 minutes 11 seconds east 40.57 feet to a point of curvature; thence,
10. By a curve to the right having a radius of 89.00 feet, an arc length of 24.57 feet, and whose chord bears north 43 degrees 35 minutes 43 seconds east 24.49 feet to a point in line of the aforementioned Bernards Township Board of Education; thence,
11. Along the same, south 20 degrees 47 minutes 36 seconds east 38.63 feet to the place of beginning.

All bearings being in accordance with New Jersey State Plane Coordinates NAD 83 and containing an area of 0.33 acre, more or less, as calculated by Hatch Mott MacDonald.

Being part of the same lands and premises conveyed to the grantor herein by deed dated August 12, 1985 and recorded in the Somerset County Clerk's Office in book 1550 of deeds on page 225, and by a deed dated August 21, 2002 and recorded in the Somerset County Clerk's Office in book 5198 of deeds on page 1665.

Subject to any easements or restrictions either recorded or unrecorded.

Subject to any rights of way as may have been granted any public utility.

  
Pamela Mathews, PE, LS  
NJ License #41181

Checked by: JC