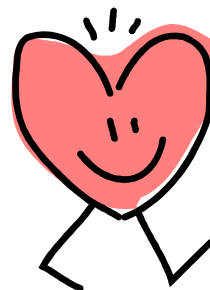
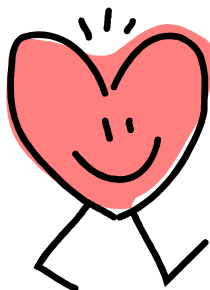
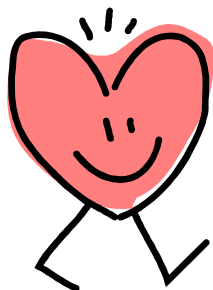


The Kindergarten Team asks you to show what a caring community Liberty Corner School is by donating to the Saint Luke's Food Pantry!



Pillar of Character:
Service Project:

Caring
Food Collection for
St. Luke's Food Pantry, North
Plainfield, NJ

Collection Dates:

Tuesday, May 17-Thursday, May 26

Items: Pasta, spaghetti sauce, cereal, soup, peanut butter, jelly, juice boxes, granola bars, canned fruit/vegetables, Parmalat milk, or any other non-perishable items are also fine.

Thank you!